



SNOWBOUND AND LEADERSHIP CAMP

— SEVEN DAYS WINTER CAMP FOR TEENS —

AGES: 10 - 16
NISEKO MOIWA SKI RESORT, JAPAN
WINTER DATE: 15 - 21 DECEMBER 2024
SPRING DATE: 25 - 31 MARCH 2025

SNOW GAMES | LEADERSHIP ACTIVITY
SKI SESSIONS | GYMNASIUM | JOURNALISM

This winter, let your teens immerse themselves in a world of snowy adventure and action-packed experiences at our Winter Camp! From skiing to leadership workshops, each day is filled with fun, friendship, and exciting challenges. It's the ultimate way for teens to enjoy the magic of the snowy season!



CONTENT

INTRODUCTION	3
WEEKLY SCHEDULE	4
ACCOMODATION	5
REGISTRATION AND PAYMENT	6
FAQ	7



INTRODUCTION & PROGRAM FEATURES

Welcome to Snowbound and Leadership Camp 2024/25, an unforgettable experience that blends thrilling outdoor adventures with world-class leadership training and cultural exploration in the heart of Niseko, Japan. Our camp offers teens the opportunity to discover the secrets of back-country skiing, connect with Hokkaido's rich history, and gain valuable life skills.



World-Class Leadership Training

Learn to "own the room" with presentation skills workshops led by counselors from top universities in the US and Europe. Develop confidence, captivate audiences, and master practical communication techniques. This unique setting in Niseko inspires creativity as participants "think outside the box" while working on dynamic presentations.

Outdoor & Cultural Exploration

Enjoy exhilarating mornings skiing in one of the world's premier winter sports destinations. Experience Niseko's hidden back-country, where local experts teach you the rules of navigating this magical landscape. In the afternoons, delve into Hokkaido's cultural richness, touring local facilities and learning about the area's distinctive history and traditions.

Collaborate and Compete

Test your leadership abilities in fun and engaging group challenges. Work with teammates from around the world to solve problems, build strategies, and compete in friendly leadership competitions. With group reshuffling throughout the camp, you'll continually push yourself to perform and support your team, with scores tallied to recognize the top performers.

Hokkaido's Unique Winter Wonderland

Immerse yourself in this northern gem of Japan, where the breathtaking beauty of Niseko surrounds you. Beyond the adrenaline-packed sports, enjoy outdoor activities that foster closeness to nature and give you a deep understanding of this magical land.

WEEKLY SCHEDULE

Our Winter Adventure Camp is carefully designed to balance fun, learning, and personal growth. Each day combines outdoor activities, leadership workshops, and cultural exploration, ensuring campers have a truly unforgettable experience.

	Day 1	Day 2	Day 3	Day 4	Day 5	Day 6	Day 7
7:00		Breakfast in First Group	Breakfast in Second Group	Breakfast: Discuss Plans	Breakfast in Third Group	Breakfast: Discuss Plans	Farewell Breakfast
8:00		Skiing 4-hour pass					Final Rankings Awards Farewell Activities
9:00							
10:00							
11:00							
12:00							
13:00	Change Outfits					Outdoor Snow Fun - Snowman, Sledding	
14:00	Pizza Contest: Group Discussions	Snowshoe Nature Tour	Ice Cream & Cheese Tour	Building Igloos			
15:00	Break						
16:00	Arrivals & Social games among those who have arrived	Niseko & Hokkaido Learning	Leadership activity: Pathfinder	Snow Battle	Leadership Activity: Niseko Survival Adventure Roleplay	Presentation plan: Design Your Niseko Tour	Home Sweet Home
17:00		Leadership Activity: Marshmallow Tower	Presentation plan: About Snowshoe	Presentation plan: Ice Cream & Cheese Ideas	Drama Plan: Your Niseko Tour	Finalize & Practice Presentations	
18:00	Dinner						
19:00	Counselor intros & group assignments	Group Presentations			Group Drama Skits	Group Presentations	
20:00	Shower & Bedtime						

* The above schedule is subject to change without notice.

ACCOMODATION

LODGE MOIWA 834

Campers will stay at the exciting Lodge Moiwa 834, a resort-style capsule hotel located directly in front of Niseko Moiwa Ski Resort, offering easy access to the slopes and endless adventure!

Capsule Group Room

Experience a fun and unique lodging option in our capsule group room.



Amenities

Air conditioner, TV (with game console available for rent), outlets, USB ports, a safety box, and a full-length mirror.

Capsule Features:

Each capsule includes a reading light, control panel (clock, alarm, lighting), dimensions of width 1.0m, length 1.95m, and height 1.0m.

Mattress Size: W1020 × L1930 × T60 for comfort and relaxation.

24-Hour Facilities and Amenities:

Lodge Moiwa 834 is designed for comfort and convenience, featuring:



24-Hour Front Desk



Shared Lounge



Restaurant



Locker



Luggage Space



Shower Room



Changing Area



Coin Laundry



REGISTRATION & PAYMENT



- Please fill up and submit the online reservation form.
- Once we receive the reservation, we will send you the credit card payment link.
- Full payment must be received within 7 days of booking to confirm the reservation.
- If the booking is made 7 days or less from activity/camp start date, full balance payment must be received within 48 hours of making the booking.
- Payment must be in Japanese yen via credit card or bank/international wire transfer.
- Visa, Mastercard, JCB, AMEX, and Diners Club accepted.
- International Wire Transfer: An additional + JPY 5,000 fee will be applied.

BANK TRANSFER

ACCOUNT NAME: Epic Japan Co., Ltd.

BANK NAME: SUMITOMO MITSUI BANKING CORPORATION

BRANCH NAME: NAMBA

ACCOUNT NUMBER: ORDINARY ACCOUNT 8181549

INTERNATIONAL WIRE TRANSFER

ACCOUNT NAME: Epic Japan Co., Ltd.

BANK NAME: SUMITOMO MITSUI BANKING CORPORATION

BRANCH NAME: NAMBA

BANK ADDRESS: 5-1-60, Namba, Chuo-ku, Osaka-shi, Osaka, 542-0076, Japan

ACCOUNT NUMBER: 111-8181549

SWIFT CODE: SMBCJPJT



FAQ

What essential gear should my child bring?

- Comfortable athletic and casual clothing for 1 week
- Base layers: At least 3 sets of merino wool base layers
- Outerwear: Waterproof, insulated ski jacket and pants; fleece jacket and extra warm layers
- Gloves & Hats: 2 pairs of snow Gore-Tex winter gloves, 2 woolen hats, and a neck warmer
- Footwear: Winter boots with good grip on soles; ski boots and helmets (available for rent on request)
- Accessories: Goggles, sunglasses, and 7 pairs of merino wool socks
- Other Essentials: Water bottle, hygiene items (toothbrush, toothpaste, soap, shampoo, etc.), SPF 50+ sunscreen for face and body
- Optional: Books, board games, or Kindle for downtime

When should we arrive?

Check-in is between 2:00 PM and 3:00 PM on the first day of camp. If you need any additional information or assistance with travel arrangements, feel free to reach out.

Which airport should we fly into?

The nearest airport is New Chitose Airport (CTS), which handles both international and domestic flights.

How do we get to Niseko from New Chitose (CTS) Airport?

There are multiple transfer options available, including train, bus, or taxi. Our team will provide detailed instructions to help you choose the best option.

Are towels, bedding, and pillows provided?

Yes, we provide all necessary bedding, pillows, and towels for showers, so there's no need to bring your own.

Will my child be supervised at all times?

Yes, campers will be supervised 24/7 by our trained staff to ensure their safety and well-being throughout the camp.

Can dietary restrictions or allergies be accommodated?

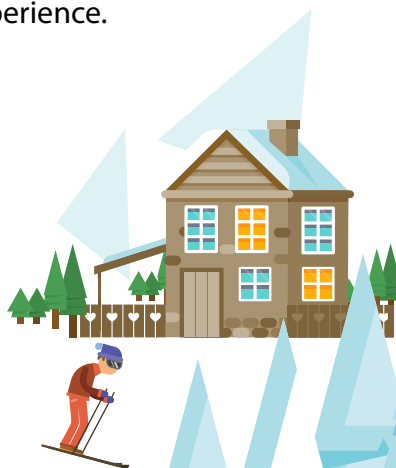
Yes, we accommodate special dietary requirements. Please inform us in advance so we can prepare suitable meals.

What happens if my child gets injured or feels unwell?

Our camp staff are trained in first aid, and we have access to medical care in case of emergencies. Parents will be notified immediately if any issues arise.

How can parents receive updates about the camp?

We will send out daily updates, including photos and highlights, via email or a private online platform, so parents can stay connected to their child's camp experience.





Register Now @
www.camp-niseko-moiwa.com

Organized by Moiwa Resorts Operation Co., Ltd. and EPIC JAPAN
448 Niseko Aza, Niseko-cho,
Abuta-gun, Hokkaido, Japan 048-1511

For more information, please contact us via
Whatsapp at +81 80 8158 7119 or email camp@niseko-moiwa.jp